

For more information about firing these glazes - go to our website

... georgies.com/coyote.glazes ...

TEXAS TWO-STEP

Oil spot glazes at cone 10 have provided some of the most striking and unique finishes in ceramics. Now, Coyote Texas Two-Step glazes provide the same sought-after effect at cone 6, in a breathtaking variety of color combinations. These glazes work as a two part system, with the top coat pulling away to reveal brilliant spots of the glaze beneath.

Below you can see the Two-Step series, with five of the overcoat/undercoat combinations shown. To use the Texas Two Step glazes, simply apply a Step One Undercoat to bisque ware (two or three coats brushing or one coat dipped) and wait for it to dry completely. Then, cover all or part of the first color with your choice of Step Two Overcoat. When the piece is fired to cone 6 in an electric kiln, the glazes will interact, creating a phenomenal oil spot effect.

Varying the thickness of the glazes during application will have a dramatic effect on the finished piece, as the thicker the glazes get, the larger the spots they create will be. We found that the optimum thickness should be two coats of the Step One Undercoat and three coats of the Step Two Overcoat, but you may prefer thicker or thinner applications for different effects. Try experimenting!

Overcoats

Pint

CG150	Blue Moon	\$19.00
CG151	Birch	\$17.80
CG152	Texas Rose	\$25.60
CG153	Marshmallow	\$17.60
CG154	Sea Mist	\$18.60
CG155	Clementine	\$23.40



CG150



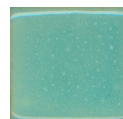
CG151



CG152



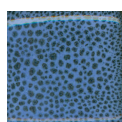
CG153



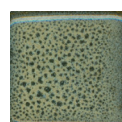
CG154



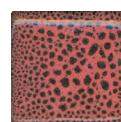
CG155



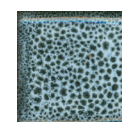
CG150 over
CG140



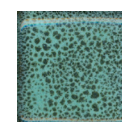
CG151 over
CG140



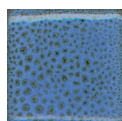
CG152 over
CG140



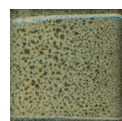
CG153 over
CG140



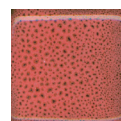
CG154 over
CG140



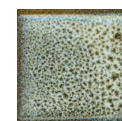
CG150 over
CG141



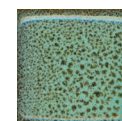
CG151 over
CG141



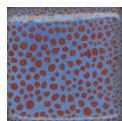
CG152 over
CG141



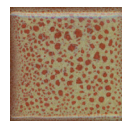
CG153 over
CG141



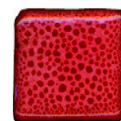
CG154 over
CG141



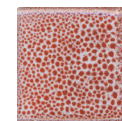
CG150 over
CG142



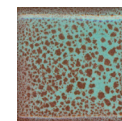
CG151 over
CG142



CG152 over
CG142



CG153 over
CG142

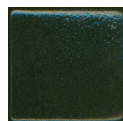


CG154 over
CG142

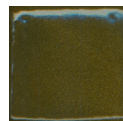
Undercoats

Pint

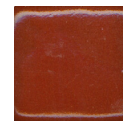
CG140	Licorice	\$18.10
CG141	Coffee Bean	\$17.00
CG142	Brick Red	\$31.00
CG143	Fern	\$19.60
CG144	Mulberry	\$21.60
CG145	Persimmon	\$24.90



CG140



CG141



CG142



CG143



CG144



CG145

THICKNESS TESTS

Marshmallow (CG153) brushed
over (CG140) Licorice.

Do you see how spots
become noticeably larger and
less regular after each
new coat of glaze?

Marshmallow (CG153) dipped
over Brick Red (CG142).

